

# CLINICAL TECHNIQUE

**CORONARY**  
Syringe attempted  
to aspirate and failed.

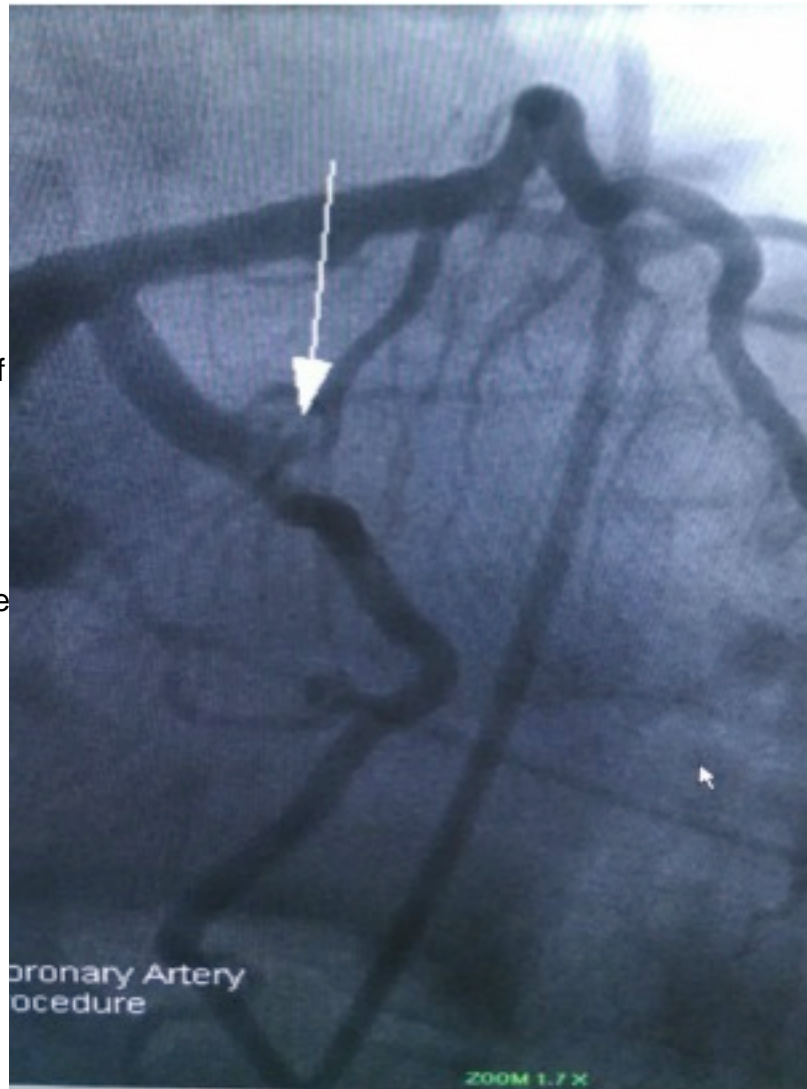
**ASPIRE used and succeeded.**

## PRE-ASPIRE POST 1X BASIC SYRINGE FAILURE

55 Year old male,  
presented in the ER  
with chest pain for 4  
days.  
Angiogram revealed  
occluded Marginal off of  
the Circumflex.

Thrombus aspiration  
attempted with Pronto  
catheter. Pronto  
catheter did not aspirate  
any visible thrombus,  
TIMI 0 flow.

Clinician was about to  
use an AngioJet.  
Instead, they decided  
they wanted to try the  
ASPIRE Aspirator.



**CONTROL**  
MEDICAL TECHNOLOGY

Control Medical Technology  
1920 East Hallandale Beach Blvd., Suite 905  
Hallandale, Florida 33009 USA  
[www.ASPIRATIONMEDICAL.com](http://www.ASPIRATIONMEDICAL.com)  
(954) 534-9345 Office  
(954) 457-2448 Fax



ASPIRE RX-LP Rapid-Exchange Catheter System and ASPIRE Aspirator are indicated for removal of fresh, soft emboli and thrombi from vessels in the peripheral & coronary vasculature.  
ASPIRE MAX Aspiration Systems are indicated for the removal of fresh, soft emboli and thrombi from vessels in the peripheral vasculature.  
ASPIRE Aspirators are also indicated to be used as piston syringes to aspirate fluid from the body.

## POST-ASPIRE SUCCESSFUL ASPIRATION

Pronto catheter removed and replaced with a Terumo catheter and ASPIRE Aspirator.

Thrombus successfully aspirated revealing lesion.

AngioJet was not used.



**CONTROL**  
MEDICAL TECHNOLOGY

Control Medical Technology  
1920 East Hallandale Beach Blvd., Suite 905  
Hallandale, Florida 33009 USA  
[www.ASPIRATIONMEDICAL.com](http://www.ASPIRATIONMEDICAL.com)  
(954) 534-9345 Office  
(954) 457-2448 Fax



# CLINICAL TECHNIQUE

**CORONARY**  
Syringe attempted  
to aspirate and failed.

**ASPIRE used and succeeded.**

## POST-ASPIRE SUCCESSFUL ASPIRATION

Angiogram post  
PTCA and Stent  
275 X 38



**CONTROL**  
MEDICAL TECHNOLOGY

Control Medical Technology  
1920 East Hallandale Beach Blvd., Suite 905  
Hallandale, Florida 33009 USA  
[www.ASPIRATIONMEDICAL.com](http://www.ASPIRATIONMEDICAL.com)  
(954) 534-9345 Office  
(954) 457-2448 Fax



ASPIRE RX-LP Rapid-Exchange Catheter System and ASPIRE Aspirator are indicated for removal of fresh, soft emboli and thrombi from vessels in the peripheral & coronary vasculature.  
ASPIRE MAX Aspiration Systems are indicated for the removal of fresh, soft emboli and thrombi from vessels in the peripheral vasculature.  
ASPIRE Aspirators are also indicated to be used as piston syringes to aspirate fluid from the body.

# CLINICAL TECHNIQUE

**CORONARY**  
Syringe attempted  
to aspirate and failed.

**ASPIRE used and succeeded.**

**PRE-ASPIRE  
POST 2X BASIC SYRINGE  
FAILURE**

**POST-ASPIRE  
SUCCESSFUL ASPIRATION  
<10s**

Patient coded and cardioverted with chest compression in ICU. Thrombus aspiration unsuccessfully attempted with Export catheter and syringe. Second thrombus aspiration attempted with QuickCat and syringe failed.

<http://youtu.be/gOHshNrdFkQ>

QuickCat was left inside the artery and an ASPIRE Aspirator was used to successfully aspirate thrombus in <10 seconds.

<http://youtu.be/ZQGQFNluM8o>

**CONTROL**  
MEDICAL TECHNOLOGY

Control Medical Technology  
1920 East Hallandale Beach Blvd., Suite 905  
Hallandale, Florida 33009 USA  
[www.ASPIRATIONMEDICAL.com](http://www.ASPIRATIONMEDICAL.com)  
(954) 534-9345 Office  
(954) 457-2448 Fax



ASPIRE RX-LP Rapid-Exchange Catheter System and ASPIRE Aspirator are indicated for removal of fresh, soft emboli and thrombi from vessels in the peripheral & coronary vasculature.  
ASPIRE MAX Aspiration Systems are indicated for the removal of fresh, soft emboli and thrombi from vessels in the peripheral vasculature.  
ASPIRE Aspirators are also indicated to be used as piston syringes to aspirate fluid from the body.